

Savanna

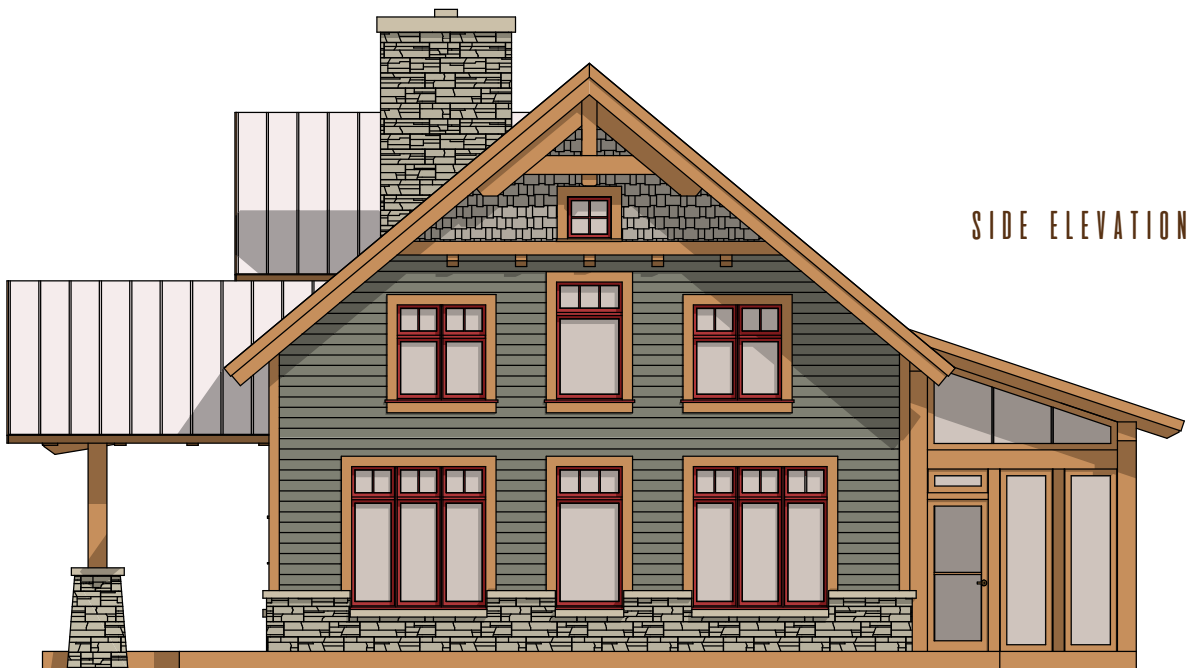


SAVANNA-TIMBER FRAME HOME

The open main floor includes a connected kitchen, dining room, and living space.

The second floor features a large loft open to the main floor below.

This home speaks timeless beauty and a prominently defined timber exterior.



SIDE ELEVATION

Savanna



FIRST FLOOR: 1,008 SF

KITCHEN
LIVING ROOM
DINING ROOM
LAUNDRY/ MUDROOM
BEDROOM
BATH

SECOND FLOOR: 402 SF

BATH
LOFT

TOTAL: 1,410 SF

