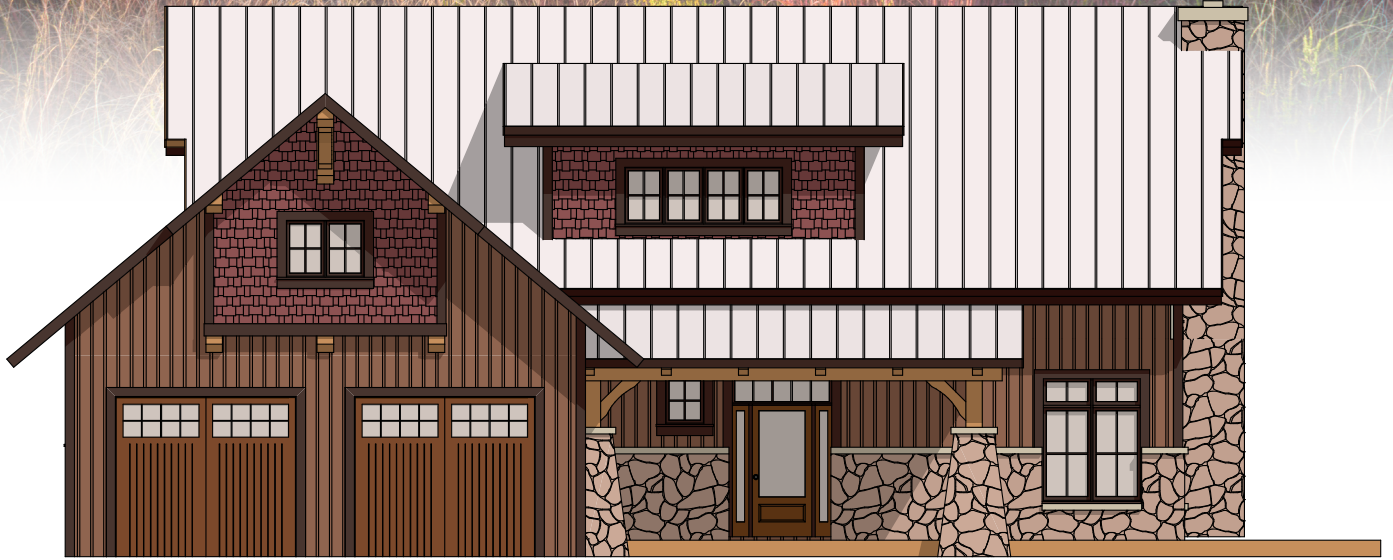


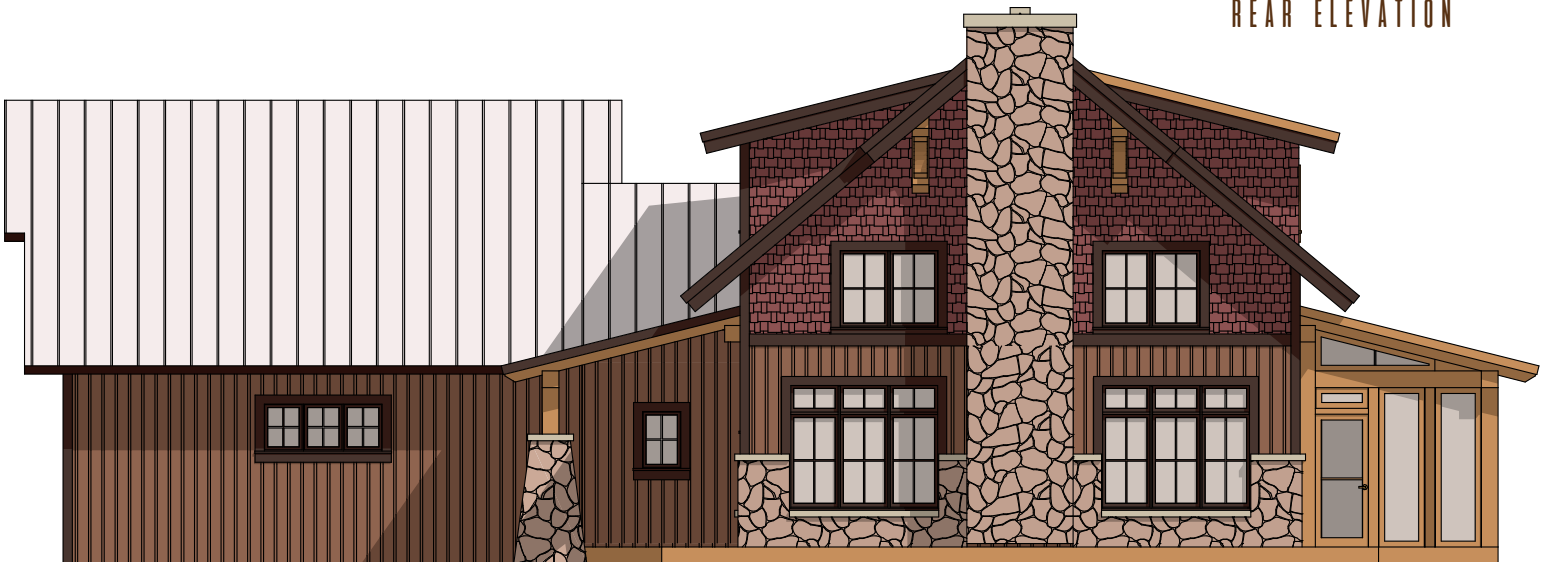
Fox Hollow



FOX HOLLOW - TIMBER FRAME HOME

The first floor includes an open concept kitchen connected to a dining and living room and two spacious bedrooms. The second floor features a large loft open to the main floor below and a master suite.

REAR ELEVATION



Fox Hollow



FIRST FLOOR: 1,472 SF

- KITCHEN
- LIVING ROOM
- DINING ROOM
- BEDROOM #1
- BEDROOM #2
- BATH
- LAUNDRY ROOM
- MUDROOM

SECOND FLOOR: 721 SF

- MASTER BEDROOM
- MASTER BATH
- LOFT

TOTAL: 2,193 SF

