

Victoria Bay



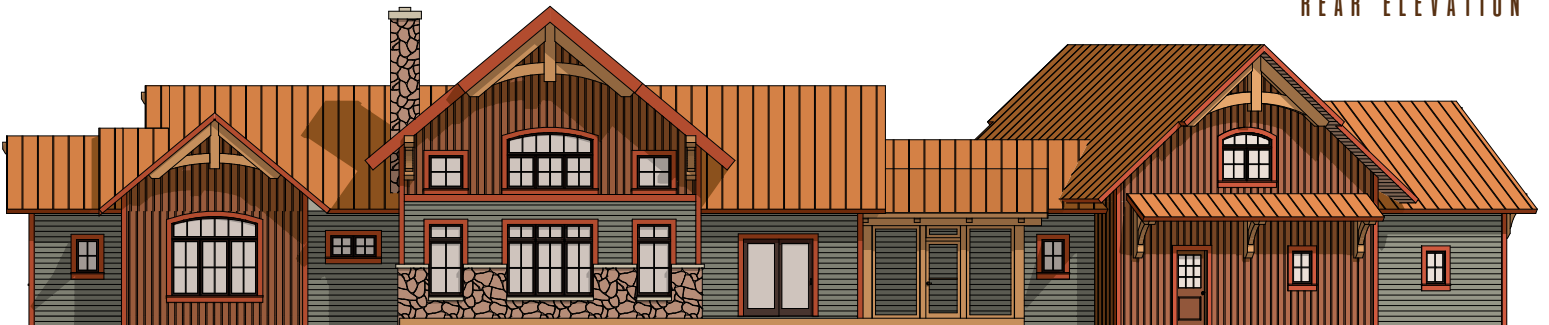
VICTORIA BAY-TIMBER FRAME HOME

This stunning, single-story home, combines an eye-catching rugged exterior with a luxurious open layout.

Through the entry, the living room is just beyond the timber frame columns. It's easy to entertain in this space; the kitchen is connected to spacious living and dining rooms. A walk-in pantry keeps everything close at hand.

Your master suite sits on the right side of the home, a huge walk-in closet, and a large separate shower and tub. Another suite, ideal for guests, waits near the front. Bonus space upstairs includes an open loft.

REAR ELEVATION



Victoria Bay



MAIN LEVEL: 2,381 SF

LOFT: 400 SF

KITCHEN
LIVING ROOM
DINING ROOM
MASTER SUITE
BEDROOM
BATH
LAUNDRY ROOM
MUDROOM
POWDER ROOM
PANTRY

TOTAL: 2,781 SF