



Windsor Peak

WINDSOR PEAK-TIMBER FRAME HOME

The Windsor Peak is an stunning 2-story timber frame home. The kitchen is open to the dining room and includes a large walk-in pantry. With an open floor plan, the main living area is perfect for entertaining visitors, and with separate bedroom suites throughout the home, each of your guests will have a retreat to call their own.

FRONT ELEVATION



© 2018 Custom Timber Frames

CUSTOMTIMBERFRAMES.COM | FOR MORE INFORMATION PLEASE CALL 608-287-9033



Windsor Peak

WINDSOR PEAK-TIMBER FRAME HOME

Take in the view from nearly every room in the house. To enhance your outdoor space, the expansive screened-in porch will allow you to enjoy a relaxing morning read or long summer evenings with friends. Impress your guests and neighbors with the great room window wall framed with all the architectural timber details found in each of our homes.

REAR ELEVATION



© 2018 Custom Timber Frames

CUSTOMTIMBERFRAMES.COM | FOR MORE INFORMATION PLEASE CALL 608-287-9033

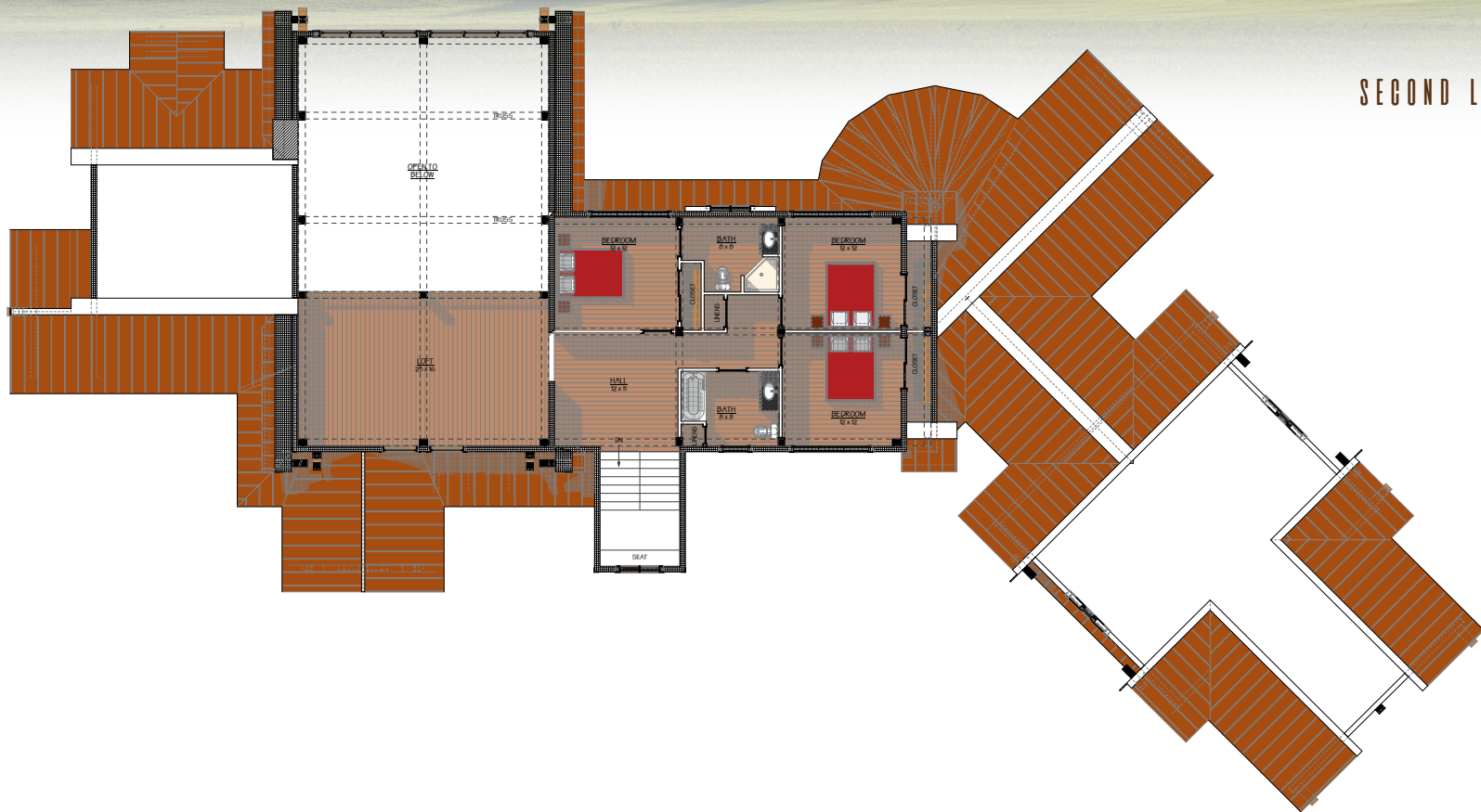
Windsor Peak



MAIN LEVEL: 3,282 SF

- LIVING ROOM
- STUDY
- DINING ROOM
- KITCHEN
- MASTER SUITE
- GUEST SUITE
- POWDER ROOM
- LAUNDRY ROOM
- MUDROOM
- PANTRY

Windsor Peak



SECOND LEVEL: 912 SF

LOFT
3 BEDROOMS
2 BATHS